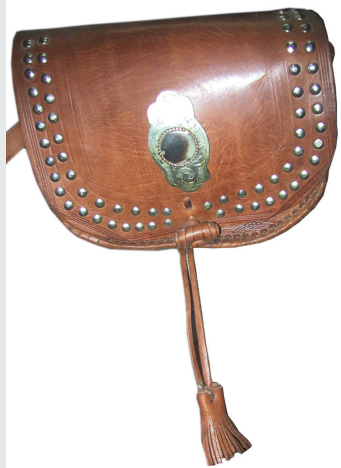


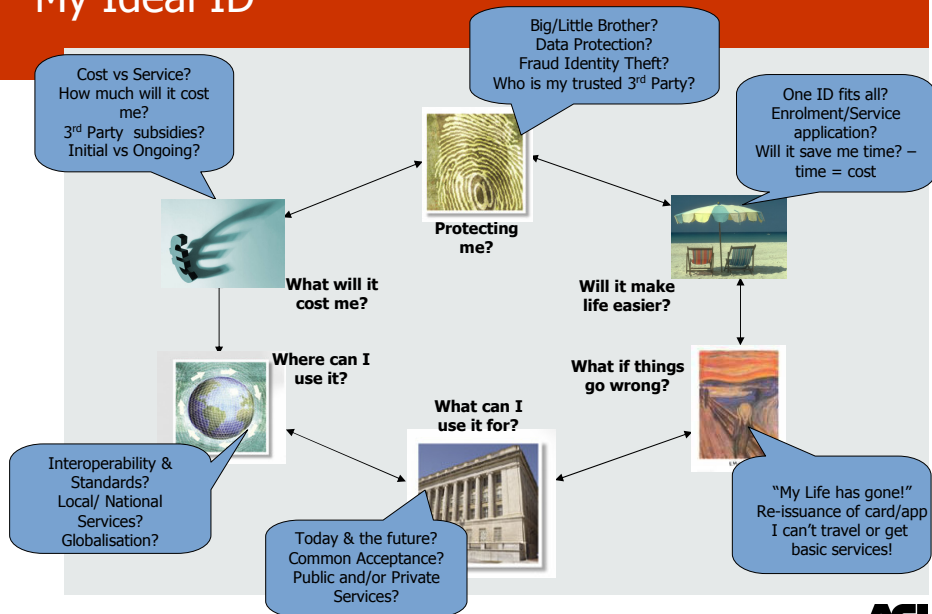
# Handbag



- Look at the ID related information I have to carry
- How many times have you NOT had the required proof of ID with you when you need it? Can you find it when you need it?
  - Passport, Driving licence, bank statements, utility bills, etc etc
- So – what is an Ideal ID?



# My Ideal ID



## Mandatory Factors



- **Public acceptance**
  - Has to be seen as a service not a cost
  - What does the "user" of e-ID really want
    - Security
    - Segmentation
    - Benefits
- **Multi-application**
  - What, when, how
  - Public and Private Co-op
- **Globalisation**
  - Standards and Interoperability
  - Political Considerations
- **Infrastructure**
  - Enrolment & Issuance
  - Post-Issuance Application Management
  - Secure Communications
- **Can we learn from Finance/Telco/Transport Initiatives?**